

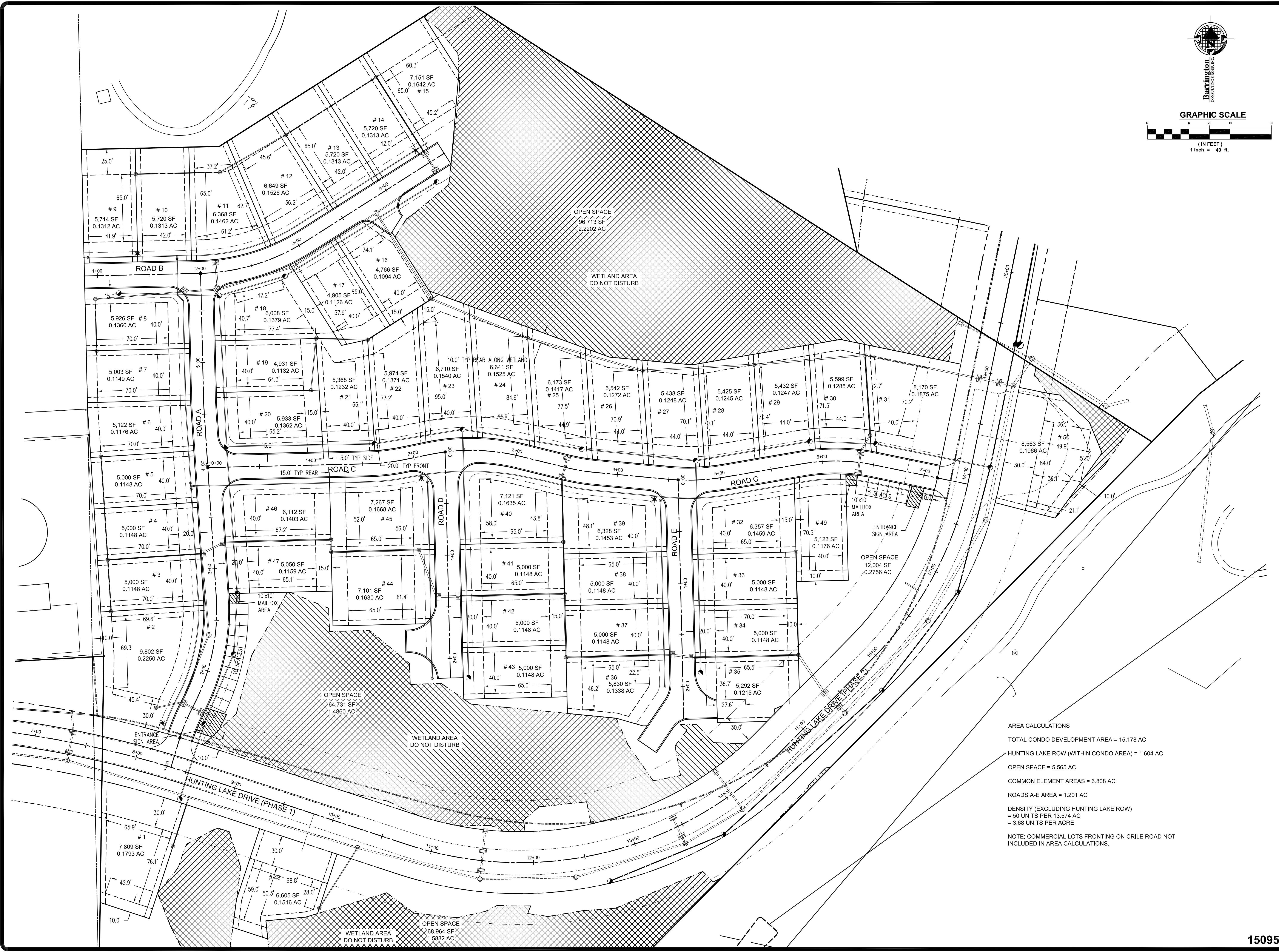
REVISIONS	BY

Barrington
CONSULTING GROUP, INC.
 9114 TYLER BLVD., MENTOR, OHIO 44060
 PHONE 440.205.1260 FAX 440.205.1262
 www.BarringtonCGI.com

HYGROVE VILLAS CONDOMINIUMS
QUAIL DEVELOPERS, INC.
TODD E. VICTOR
 20 ELBERTA ROAD
 PAINESVILLE, OH 44077-1231
 PH: 440-357-9242, FAX: 440-357-9277

HYGROVE VILLAS CONDOMINIUMS
 QUAIL HOLLOW #11 - HUNTING LAKE DRIVE
 CONCORD TOWNSHIP - LAKE COUNTY - OHIO
CONDOMINIUM LAYOUT PLAN

DRAWN	LKS
CHECKED	DWN
DATE	FEB. 5, 2018
SCALE	1" = 40'
JOB NO.	15095
SHEET	



AREA CALCULATIONS
 TOTAL CONDO DEVELOPMENT AREA = 15.178 AC
 HUNTING LAKE ROW (WITHIN CONDO AREA) = 1.604 AC
 OPEN SPACE = 5.565 AC
 COMMON ELEMENT AREAS = 6.808 AC
 ROADS A-E AREA = 1.201 AC
 DENSITY (EXCLUDING HUNTING LAKE ROW)
 = 50 UNITS PER 13.574 AC
 = 3.68 UNITS PER ACRE
 NOTE: COMMERCIAL LOTS FRONTING ON CRILE ROAD NOT INCLUDED IN AREA CALCULATIONS.

W:\01510501\Environment\Plan\Buckeye\0501\PLAN\PROP_0400_12102018.dwg, 2/2/2018 10:51:16 AM, Copyright Barrington Consulting Group

W:\BLOCKS\B00005\Y4K358A3_2012.09.26