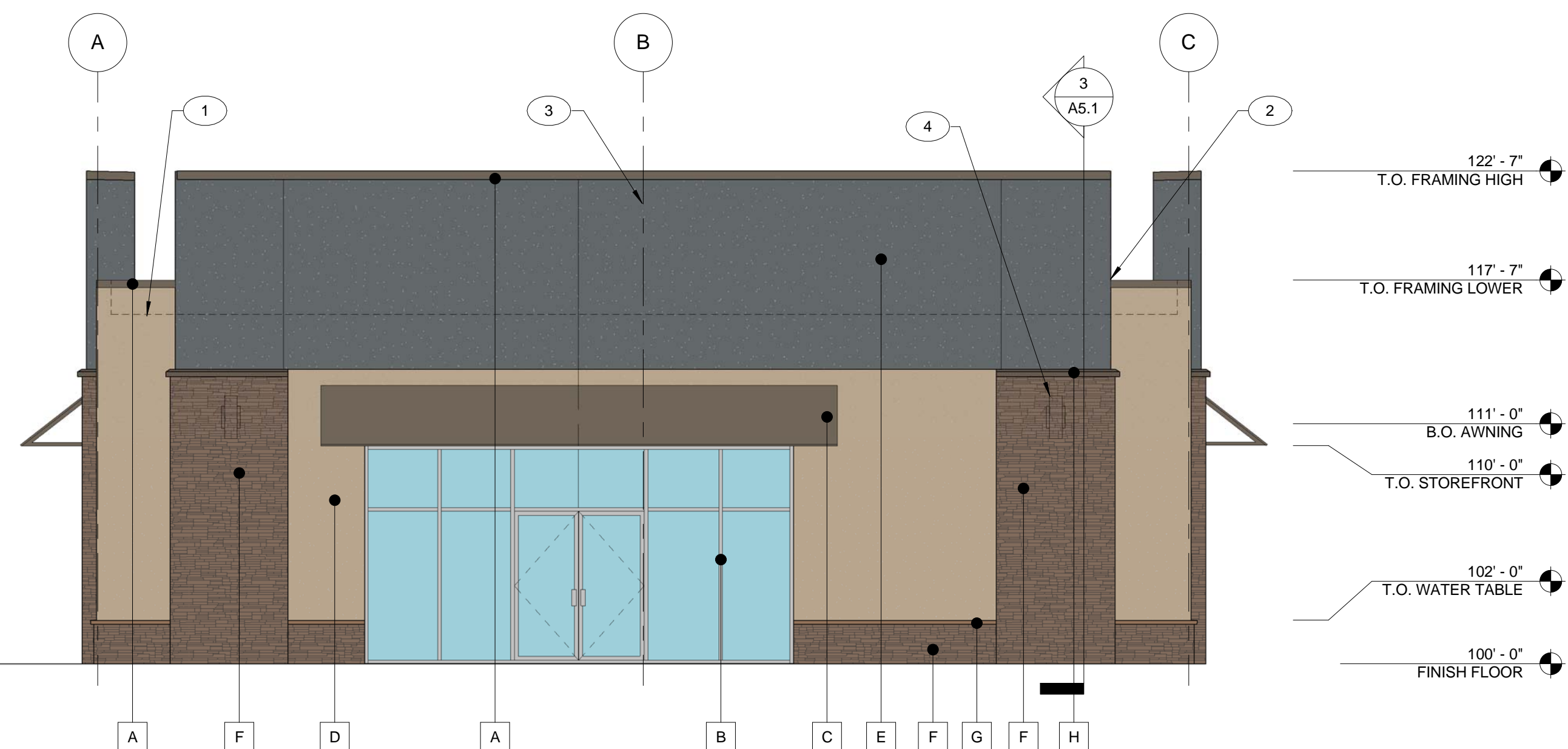


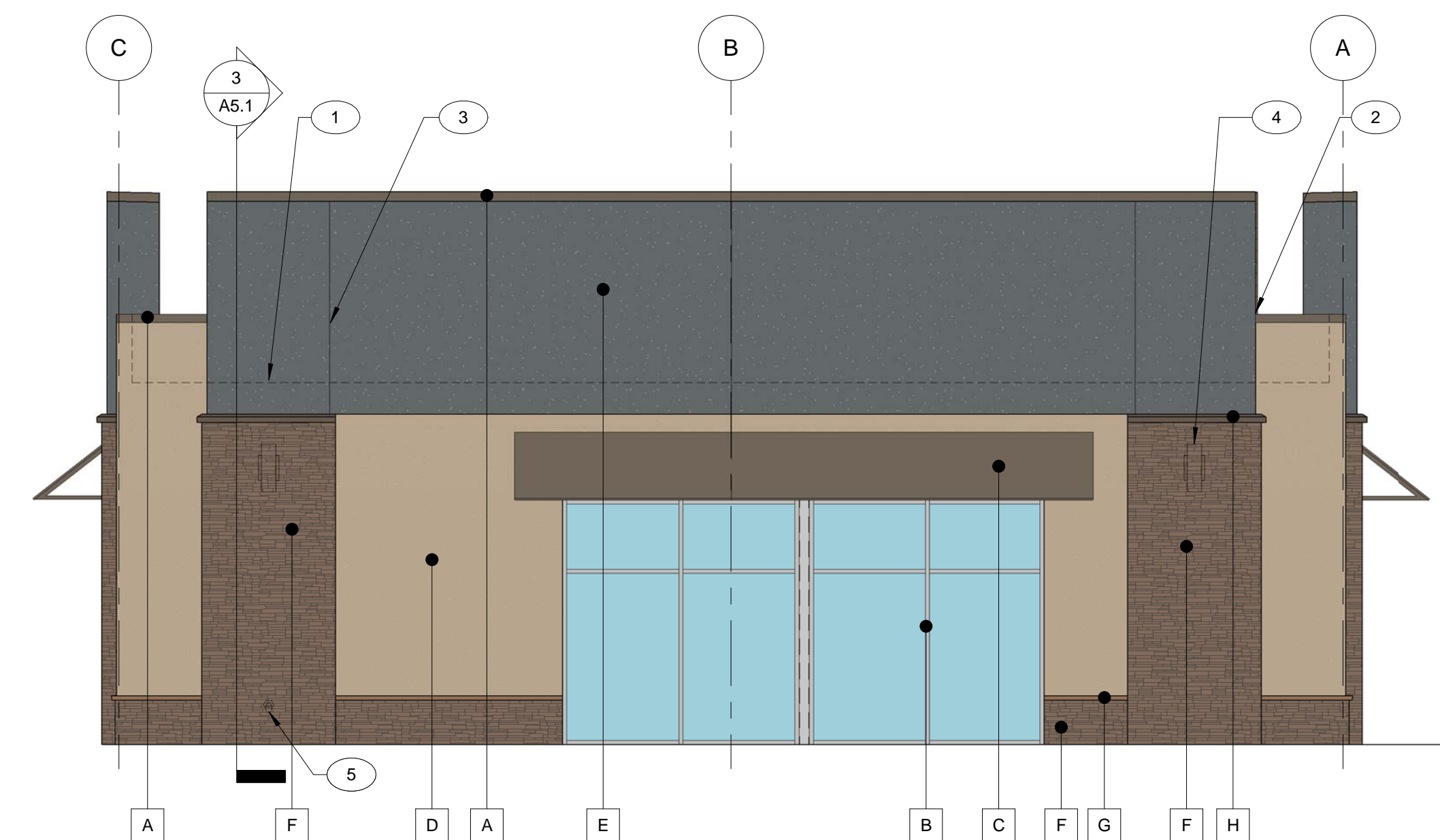
WEST ELEVATION COLOR

SCALE: 3/16" = 1'-0"



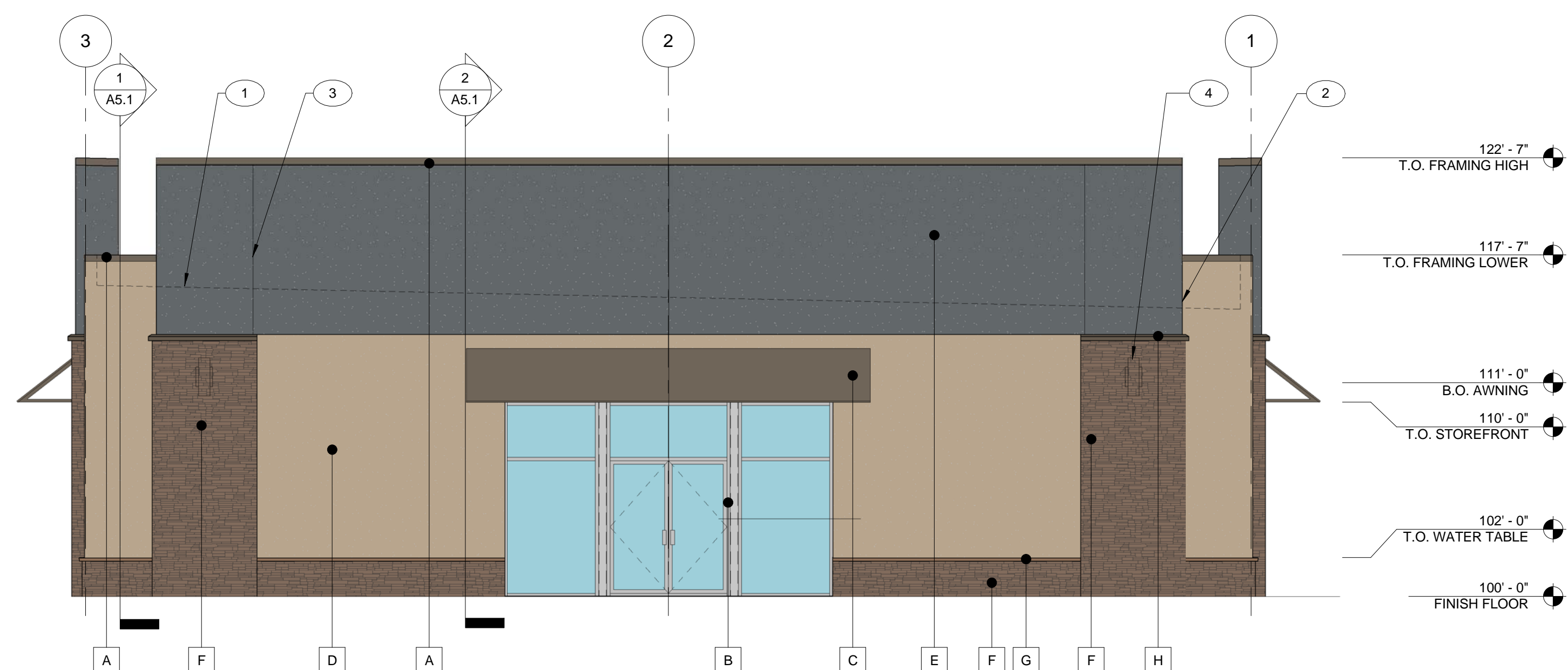
SOUTH ELEVATION COLOR

SCALE: 3/16" = 1'-0"



NORTH ELEVATION COLOR

SCALE: 3/16" = 1'-0"



EAST ELEVATION COLOR

SCALE: 3/16" = 1'-0"

GENERAL NOTES

A. SEE SECTIONS AND DETAILS FOR DRAWING SPECIFICATIONS.

FINISH LEGEND

- A. PARAPET COPING, "PAC-CLAD" PAC-TITE TAPERED PREFINISHED COPING, COLOR TO MATCH PAINT COLOR: "SHERWIN WILLIAMS" SW7026 GRIFFIN.
- B. ALUMINUM STOREFRONT, "KAWNEER" TRIFAB 451T, CLEAR ANODIZED.
- C. STEEL AWNING: "SUNBRELLA" TRUE BROWN 4621 FABRIC OVER SHOP FABRICATED STEEL FRAME, FRAME TO BE PRIMED AND PAINTED COLOR: "SHERWIN WILLIAMS" SW7026 GRIFFIN.
- D. EXTERIOR STUCCO FINISH SYSTEM, FINE SAND PEBBLE TEXTURE. USE "PAREX" ARMOURWALL 100 WATERMASTER AS BASIS OF DESIGN. INTEGRAL COLOR TO MATCH PAINT COLOR: "SHERWIN WILLIAMS" SW7534 OUTERBANKS.
- E. EXTERIOR STUCCO FINISH SYSTEM, FINE SAND PEBBLE TEXTURE. USE "PAREX" ARMOURWALL 100 WATERMASTER AS BASIS OF DESIGN. INTEGRAL COLOR TO MATCH PAINT COLOR: "SHERWIN WILLIAMS" SW7075 WEB GREY.
- F. "ELDORADO STONE" CASTAWAY, DRY STACKED STONE VENEER.
- G. "ELDORADO STONE" SAND SNAPPED EDGE WAINSCOT SILL.
- H. STUCCO ACCENT BAND, FINE SAND PEBBLE TEXTURE. USE "PAREX" ARMOURWALL 100 WATERMASTER AS BASIS OF DESIGN. INTEGRAL COLOR TO MATCH PAINT COLOR: "SHERWIN WILLIAMS" SW7026 GRIFFIN.

NO.	REVISIONS	DATE

1010 S. ALLANTE PL.
SUITE 100
BOISE, IDAHO 83703
(208) 336-8370
FAX (208) 336-8380



PROPOSED DEVELOPMENT FOR:
**CELLULAR SALES
CONCORD TOWNSHIP**
PAINESVILLE, OH 44077
11129 GOLD CT.

KEYNOTES

1. LINE OF ROOF BEYOND.
2. FLASH COPING CAP/ROOF MEMBRANE AT WALL TERMINATION PER ROOF MFR. RECOMMENDATIONS.
3. STUCCO CONTROL JOINT, SEE DETAIL 6/A7.2. COORDINATE LOCATION IN FIELD WITH CMU CONTROL JOINTS ON STRUCTURAL DRAWINGS.
4. EXTERIOR WALL MOUNTED LIGHT FIXTURE, TYP., SEE ELECTRICAL DRAWINGS.
5. COW'S TONGUE SCUPPER TO BE PIPED WITHIN WALL FRAMING. MOUNT SCUPPER FROM CENTERLINE OF PIPE TO 1'-4" A.F.F.

DRAWN	SAS
DATE	5/15/18
CHECKED	MLA
JOB NUMBER	18009

EXTERIOR ELEVATIONS

A4.1C